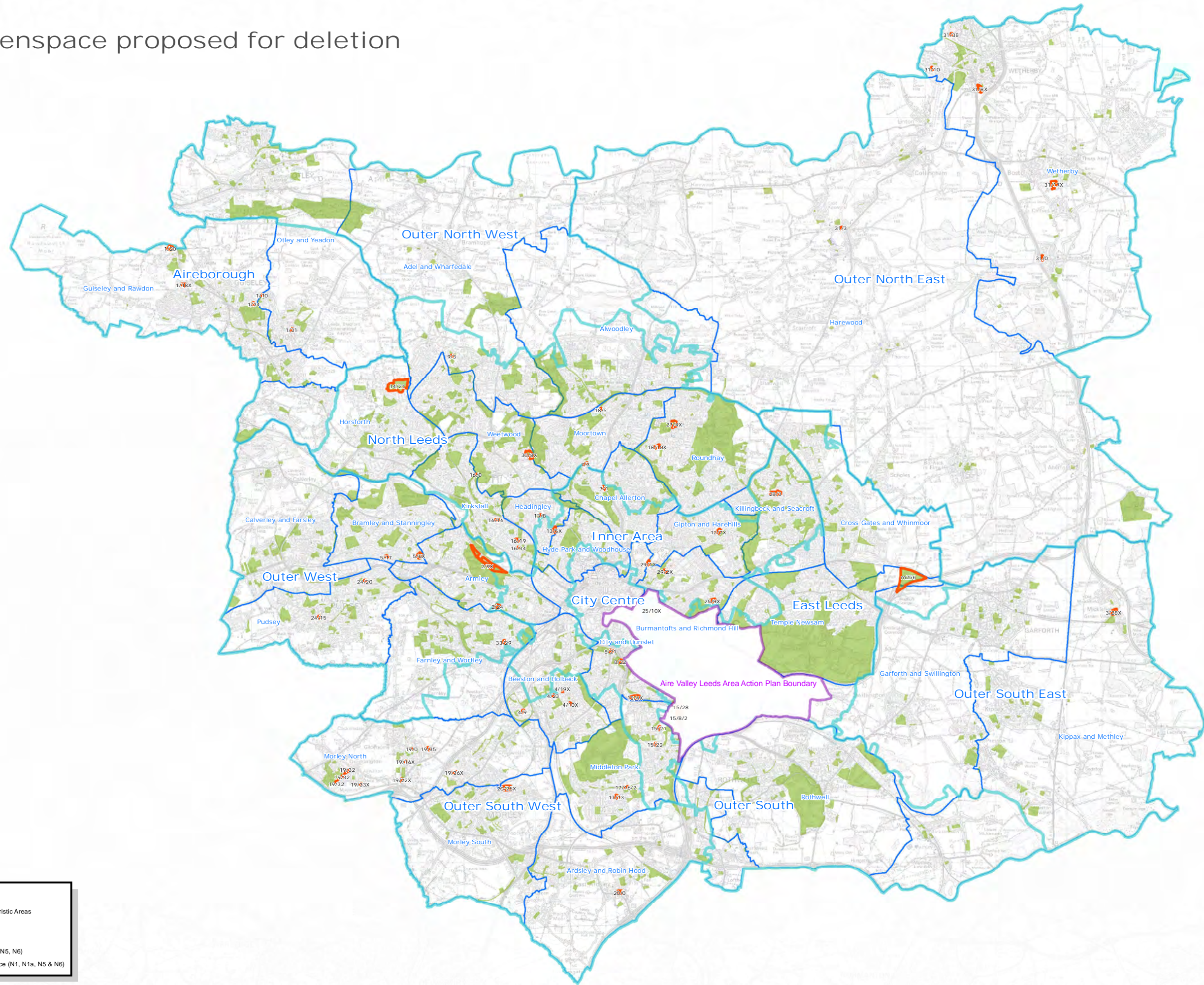


UDP Greenspace proposed for deletion

No.	UDP REF	ADDRESS	WARD	AREA M2	AREA HA	Policy	Policy ID	Count
1	5/6X	McClaren Field, Bramley	Bramley and Stanningley	17282.769	1.728	N6 Protected Playing Pitch	N6	0
2	12/7X	Oakwood PS	Gipton and Harehills	10750.719	1.075	N6 Protected Playing Pitch	N6	0
3	13/5X	Ash Grove, Hyde Park	Headingley	9536.153	0.954	N6 Protected Playing Pitch	N6	0
4	16/0	198/200 Spen Lane, West Pk	Kirkstall	818.360	0.082	N6 Protected Playing Pitch	N6	0
5	18/10X	Chandos Park RF Gnd.	Roundhay	13559.423	1.356	N6 Protected Playing Pitch	N6	0
6	25/9X	YMCA SportsGnd. Tyas Grove	Burmantofts and Richmond Hill	11448.611	1.145	N6 Protected Playing Pitch	N6	0
7	29/2X	Shakespeare PS	Burmantofts and Richmond Hill	3524.698	0.352	N6 Protected Playing Pitch	N6	0
8	31/17X	St. John's Sch. Boston Spa	Wetherby	24396.770	2.440	N6 Protected Playing Pitch	N6	0
9	27/4X	Talbot Road Sports Gnd.	Roundhay	22102.800	2.210	N6 Protected Playing Pitch	N6	0
10	25/10X	Mount St. Mary's HS	Burmantofts and Richmond Hill	667.849	0.067	N6 Protected Playing Pitch	N6	0
11	29/1X	Primrose HS	Gipton and Harehills	7362.512	0.736	N6 Protected Playing Pitch	N6	0
12	13/8	Springbank PS	Headingley	1697.087	0.170	N6 Protected Playing Pitch	N6	0
13	30/8X	Weetwood Avenue	Weetwood	29258.132	2.926	N6 Protected Playing Pitch	N6	0
14	3/28X	Pitt Lane, Micklefield	Kippax and Methley	15613.534	1.561	N5 Proposed Open Space	N5	0
15	14/21	North Ives Farm, Brownberrie Gardens	Horsforth	144051.581	14.405	N5 Proposed Open Space	N5	0
16	19/33X	Margetson Road, Morley	Morley North	1370.311	0.137	N5 Proposed Open Space	N5	0
17	19/36X	Asquith Avenue, Morley	Morley North	1836.625	0.184	N5 Proposed Open Space	N5	0
18	19/35	Highfield Gardens, Morley	Morley North	3264.083	0.326	N5 Proposed Open Space	N5	0
19	m256	Thorp Park	Temple Newsam	234028.566	23.403	N5 Proposed Open Space	N5	0
20	1/10	Nunroyd Beck, Yeadon	Otley and Yeadon	904.390	0.090	N1 Greenspace	N1	0
21	1/31	Rockfield Terrace, Yeadon	Otley and Yeadon	2132.209	0.213	N1 Greenspace	N1	0
22	4/9	Cottingley Court	Beeston & Holbeck	3361.189	0.336	N1 Greenspace	N1	0
23	4/23	Recreation Gnd, Town St	Beeston & Holbeck	1788.375	0.179	N1 Greenspace	N1	0
24	4/19X	Old Lane, Beeston	Beeston & Holbeck	538.815	0.054	N1 Greenspace	N1	0
25	5/17	Fairfield Close	Bramley and Stanningley	2468.119	0.247	N1 Greenspace	N1	0
26	8/21	Dewsbury Road Roundabout	City & Hunslet	4071.811	0.407	N1 Greenspace	N1	0
27	8/22	Hunslet Moor Roundabout	City & Hunslet	6813.326	0.681	N1 Greenspace	N1	0
28	15/8/2	A61/M1 traffic Island	Middleton Park	44213.327	4.421	N1 Greenspace	N1	0
29	15/21	Middleton Road	Middleton Park	2082.523	0.208	N1 Greenspace	N1	0
30	15/22	Middleton Road	Middleton Park	1919.495	0.192	N1 Greenspace	N1	0
31	15/28	Stourton Sidings	City & Hunslet	5967.844	0.597	N1 Greenspace	N1	0
32	16/19	St. Michael's La. Headingley	Kirkstall	1089.248	0.109	N1 Greenspace	N1	0
33	16/19	St. Michael's La. Headingley	Kirkstall	1245.632	0.125	N1 Greenspace	N1	0
34	16/34	The Village St. Burley	Kirkstall	664.485	0.066	N1 Greenspace	N1	0
35	17/13	Acre Square	Middleton Park	8057.562	0.806	N1 Greenspace	N1	0
36	19/22X	Street Lane, Gildersome	Morley North	1605.768	0.161	N1 Greenspace	N1	0
37	24/15	Carlisle Road, Chapeltown	Pudsey	1642.330	0.164	N1 Greenspace	N1	0

No.	UDP REF	ADDRESS	WARD	AREA M2	AREA HA	Policy	Policy ID	Count
38	24/20	Swinnow Gardens, Pudsey	Pudsey	1843.513	0.184	N1 Greenspace	N1	0
39	28/3	Kentmere Approach	Killingbeck and Seacroft	19318.946	1.932	N1 Greenspace	N1	0
40	31/3	Woodacre Green, Bardsey	Harewood	965.932	0.097	N1 Greenspace	N1	0
41	31/38	Ainsty Rd. Wetherby	Wetherby	1899.429	0.190	N1 Greenspace	N1	0
42	31/8X	Boston Road, Wetherby	Wetherby	15496.760	1.550	N1 Greenspace	N1	0
43	31/0	Milnthorpe Close, Bramham	Wetherby	3006.295	0.301	N1 Greenspace	N1	0
44	33/29	Greenside Road, Wortley	Farnley and Wortley	2311.592	0.231	N1 Greenspace	N1	0
45	2/24	Carr Crofts, Armley	Armley	7875.364	0.788	N1 Greenspace	N1	0
46	1/18X	Byeway/Bradford Rd. Guiseley	Guiseley & Rawdon	4036.817	0.404	N1 Greenspace	N1	0
47	4/10X	Barkly Rd/Grovehall Ave	Beeston & Holbeck	1825.280	0.183	N1 Greenspace	N1	0
48	20/25X	Albert Road, Morley	Morley South	25809.671	2.581	N1 Greenspace	N1	0
49	19/0	Mill La/Town St. Gildersome	Morley North	681.790	0.068	N1 Greenspace	N1	0
50	1/34	Blake Crescent, Yeadon	Guiseley & Rawdon	352.619	0.035	N1 Greenspace	N1	0
51	1/34	Blake Crescent, Yeadon	Guiseley & Rawdon	1371.646	0.137	N1 Greenspace	N1	0
52	2/9X	Land off Redcote Lane	Armley	85664.084	8.566	N1 Greenspace	N1	0
53	7/3	Stainbeck, Meanwood	Moortown	1879.803	0.188	N1 Greenspace	N1	0
54	9/3	Holt Dale Approach, Holt Park	Adel & Wharfedale	1719.963	0.172	N1 Greenspace	N1	0
55	15/27	Stourton Sidings	City & Hunslet	5755.152	0.576	N1 Greenspace	N1	0
56	15/27	Stourton Sidings	Middleton Park	4662.492	0.466	N1 Greenspace	N1	0
57	16/16	Kirkstall Lane, Kirkstall	Kirkstall	2360.181	0.236	N1 Greenspace	N1	0
58	17/16/2	Middleton Park Road	Middleton Park	1974.839	0.197	N1 Greenspace	N1	0
59	19/32	Land off Moorside Rd, Driglington	Morley North	589.237	0.059	N1 Greenspace	N1	0
60	19/32	Land off Moorside Rd, Driglington	Morley North	1448.116	0.145	N1 Greenspace	N1	0
61	19/32	Land off Moorside Rd, Driglington	Morley North	362.061	0.036	N1 Greenspace	N1	0
62	19/32	Land off Moorside Rd, Driglington	Morley North	915.415	0.092	N1 Greenspace	N1	0
63	31/10	Shaw Barn La. Wetherby	Wetherby	1141.433	0.114	N1 Greenspace	N1	0
64	7/1	Model Farm, Meawood	Chapel Allerton	1846.967	0.185	N1 Greenspace	N1	0
65	18/5	Leafield Towers	Moortown	370.578	0.037	N1 Greenspace	N1	0
66	18/5	Leafield Towers	Moortown	1729.162	0.173	N1 Greenspace	N1	0
67	20/0	Parker Street	Ardsley & Robin Hood	6395.788	0.640	N1 Greenspace	N1	0
68	1/20	High Royds Hospital	Guiseley & Rawdon	11345.421	1.135	N1A Allotments	N1A	0
69	15/4X	Moor Road Hunslet	City & Hunslet	21516.902	2.152	N1A Allotments	N1A	0
70	19/16X	Vicarage Avenue, Gildersome	Morley North	1136.566	0.114	N1A Allotments	N1A	0

UDP Greenspace proposed for deletion



Key

- Housing Market Characteristic Areas
- Leeds City Council Wards
- Aire Valley AAP Boundary
- UDP Deletions (N1, N1a, N5, N6)
- UDP Protected Greenspace (N1, N1a, N5 & N6)